



Waste is your money



Recycling is play

# Contents

---

## Circular Economy System

- 12 Recycling Resource Collection & Classification
  - 18 Recycling Resource Logistics & Storing
  - 22 Recycling Resource Processing-Manufacture of Material
- 

## Culture Business

- 28 SuperBin Waste Series
- 40 SuperBin Rookie
- 44 SuperCube
- 48 Plogging Campaign

## Waste is Money Recycling is Play

The best way to resolve the waste issue is to inform and help people continuously experience that waste is not useless and worthless.

In fact, waste is an important resource that can be processed into different materials and by-products that we need to be responsible for. Therefore, SuperBin aims to realize a new culture that values waste as a source of money as well as play.

To this end, SuperBin combines science and technology of the 4th Industrial Revolution and design-based cultural contents to recreate a recycling culture that can change people's perception on waste and their behaviors. It is our duty to hand down the right culture to future generations.



# History of SuperBin

## History of investment attraction

2015

- Established SuperBin Co., Ltd
- Registered as a public technology commercialization company certified by the Ministry of Science, ICT and Future Planning
- Acquired KAIST's AI "Deep Learning" Technology
- [Received seed investment \(Mirae Holdings Co., Ltd\)](#)

2016

- Released prototypes of Nephron CP and Nephron G
- Operated a pilot project for Nephron CP in Gwacheon City

2017

- Won the grand prize at the Contest of Future Growth Engine Challenge Demo Day held by the Ministry of Science, ICT and Future Planning (Prime Minister's Prize)
- Launched the "SupBox" culture center
- Selected as First Penguin by Korea Credit Guarantee Fund
- Registered a patent for the technology of "Complex object recognition system and method based on artificial neural network analysis"
- Participated in Seoul Metropolitan City's IoT demonstration and received the highest evaluation (operating Nephron and SupBox in Seoul Children's Grand Park)
- Won the Grand Prize at the 11th Korea Excellent Patent Awards

2018

- Accredited by Korea Technology Finance Corporation as a venture enterprise
- Selected as an innovative enterprise by the Ministry of Economy and Finance
- Won the "National Amazing Innovation Award (Hyeoksiniui Minjok Paransang)"
- [Received a Series A round investment \(KRW 2 billion / Humax Co. Ltd.\)](#)

2019

- Selected as a startup representative participating in the 2019 MWC (Mobile World Congress)
- [Received a Series A round investment \(KRW 1 billion / TBT\)](#)
- Selected as a recipient of SK Group's 5th Social Progress Incentive
- Opened "Recycling Resource Warehouse" in Yeosu City
- Released mobile Nephron "SuperCube"
- Participated in the Global Impact Investment Conference (SOCAP19)
- Provided the SuperBin Rookie service to 7 schools under Seoul Metropolitan Office of Education
- Participated in the National Institute of Biological Resources Exhibition "Back to me after the Long journey - Participated in an exhibition of SK SOVAC (Social Value Connect)
- Opened "Waste Mart" in Seoul's Yeonnam-dong and "Waste Gallery" in Jeju City

2020

- Conducted KB Kookmin Bank's environment-friendly campaign
- [Received a Series B round investment \(KRW 14.1 billion / Fine Investment Corporation, P.E.F., Humax Co. Ltd., TBT, GS CALTEX, and Lotte Chemical\)](#)
- Conducted the collaboration project "Loop" with Lotte Chemical
- Provided consulting service on ESG resource circulation for Naver Green Factory
- Selected to participate in the Eco Delta Smart City project of Busan City
- Opened a SuperBin Waste Cafe in Osan City
- Ran SuperBin's 1st Plogging Campaign "Seujupeun Daligi (Waste-Picking and Jogging)"

2021

- Selected as a participating enterprise for Anyang City's Green Smart City (building an infrastructure of 100 Nephrons in Anyang)
- Launched a new Nephron model (Basic PP) based on a project agreement to convert delivery containers into resources with Asan City and Woowa Bros.
- Won the Presidential Citation at the 3rd Korea Social Economy Fair
- Selected as the 5th Innovation Icon by Korea Credit Guarantee Fund

2022

- [Received a Series B round investment \(KRW 5.9 billion / TBT and SK Geocentric\)](#)
- Launched a new Nephron model (Basic)
- Released Jalte-stick, a PET-bottle label and ring cutter
- Won the Minister's Award for Korea's AI Startup 100 of the Ministry of Science and ICT
- Operated products in the Eco Delta Smart City in Busan City
- Conducted the 2nd and 3rd Plogging Campaign "Seujupeun Daligi"
- Installed Nephrons at various locations, including Samsung Display plants, SK gas stations, and Lotte Group and its distributors

2023

- Signed an MOU to conduct a Green New Deal pilot project to build resource circulation infrastructure with Hwaseong City and SK Geo Centric
- [Received a Series B Bridge round investment \(KRW 18 billion / Korea Development Bank, IBKS & Hana Financial Investment Co. Ltd., TBT, and Korea Investment Partners\)](#)
- Nephron Basic P model designated as an innovative product by the Public Procurement Service
- Received the Ministry of SMEs and Startups (MSS) Award of 2022 GOOD DESIGN (GD) KOREA (Nephron Object) & recognized as a 2022 GOOD DESIGN (GD) KOREA (Nephron Basic) product
- Selected as a 2022 Environmental Technology Development Excellence Achievement by the Ministry of Environment (developing a high quality flake material process through a circular economy system based on digital technology)
- Construction of SuperBin im\_factory approved
- Signed business agreements with the Salvation Army of Korea and Chuncheon Self-Sufficiency Promotion Center, etc., for resource circulation projects
- Started production of r-PET flakes at the im\_factory
- Collaborates with Gangseo Yangcheon Office of Education to give 'Carbon neutral • Ecological Education'
- Collaborates with SK ecoengineering to perform 'Recycling of PET bottles in construction sites'
- Participate in the ADB's 56th Annual Meeting
- Participate in the WCE (World Climate Industry EXPO)
- SuperBin & Guro-gu facilities management corporation, both companies make a business agreement for ESG management and social value sharing

2024

- Superbin & Earth act organization, both companies make a business agreement for recycling resources collection and classification activity as bottle to bottle's materials
- Acquired GRS(Global Recycled Standard) certification(r-PET flake)
- Passed US FDA, European EFSA food contact material safety standard test
- Nextrise Awards 2023, INNOVATION PRIZE

2025

- Etnews ESG Forum Tech Startup section GRAND PRIZE
- Carried out a feasibility study of Waste Recycling Facility in Panama City
- Collaborates with Samyang Packaging to utilize and expand the use of 'Recycled Materials for Food Containers'
- Collaborates with Changnyeong Office of Education to give 'Carbon neutral • Ecological Education'
- 'im\_factory' iF DESIGN AWARD 2024 Communication, Architecture Winner
- e-Circular Governance: Signing of Agreement for Electronic Waste Disposal Operations
- Received commendation from Hwaseong City Hall for labor-management culture
- Selected as Gyeonggi Impact Unicorn by Gyeonggi-do Social Impact Creators
- Signed MOU with Hwaseong Chamber of Commerce and Industry to promote circular economy
- Participated in 'Plastic Planet' exhibition at Ganghwa Natural History Museum
- Signed MOU with KECO to expand high-quality recycled plastic production
- Selected for carbon neutrality commercialization support program by KEITI





# Circular Economy System

01

Recycling Resource  
Collection & classification

02

Recycling Resource  
Logistics & Storing

03

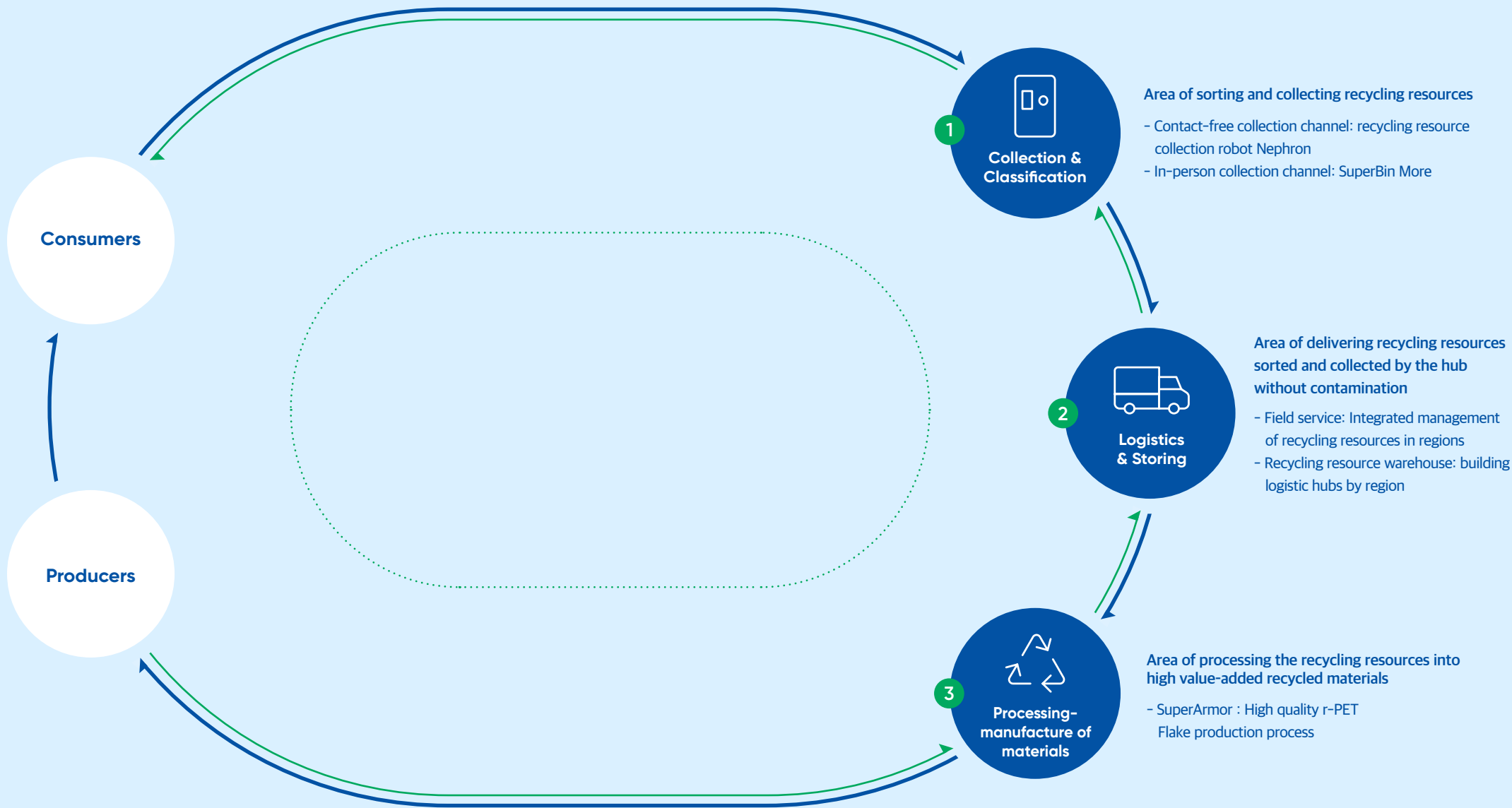
Recycling Resource  
Processing: manufacture  
of materials

Designing a circular economy  
where waste becomes new resources

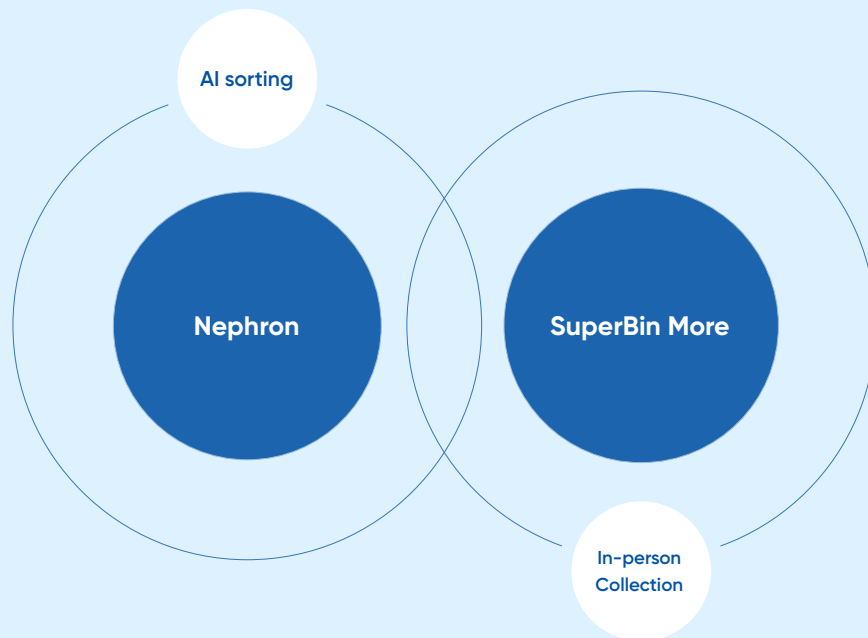
# SuperBin's Circular Economy Cycle

Circular Cycle of Purchasing, Distributing, and Processing Waste to Use as Resources

— Direction of SuperBin's circular economy cycle  
— Direction of cash compensation



# 1 Recycling Resource Collection and Classification



To build a resource circulation system, the initial stage of properly separating and sorting waste is critical. SuperBin sorts and collects resources from the early stage through its resource collection channel utilizing AI-based robot technology and connected to local communities.

## Nephron

Recycling Resource  
Collection Robot:  
Contact-Free  
Collection Channel

### Nephron sorts waste just like AlphaGo plays Go

The AI embedded in Nephron allows it to only sort and collect recyclable resources by identifying the form of waste and then provide the correct amount of compensation to users.

### Building the world's first recycling resource big database

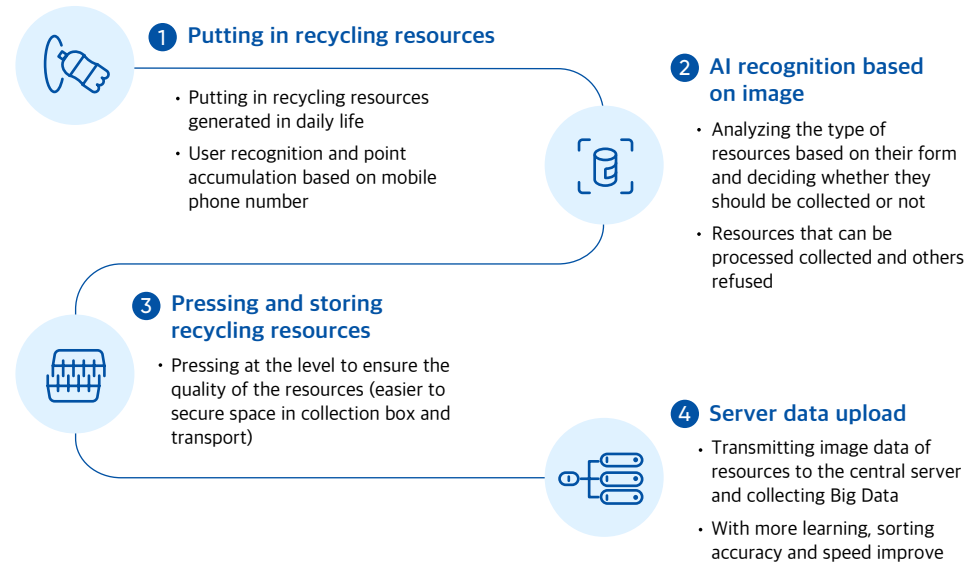
We can build a big database by learning about the recycling resources generated in daily life and utilize this big database for public purposes.

### Combination of robotics technology and ICT technology

Based on digital information, the robotics technology that sorts resources has diverse remote-control functions based on IoT.



## Nephron's Recycling Resource Detection & Sorting Process



### Nephron Point

By simply entering a phone number, points are added in line with the value of the resource, and users can request cash reimbursement when the points reach certain level. Currently, 10 points is offered for each can and PET.



# SuperBin More

In-Person Channel  
for Recycling  
Resource  
Collection

**Efforts by SuperBin to responsibly develop recycling resources generated in cities**

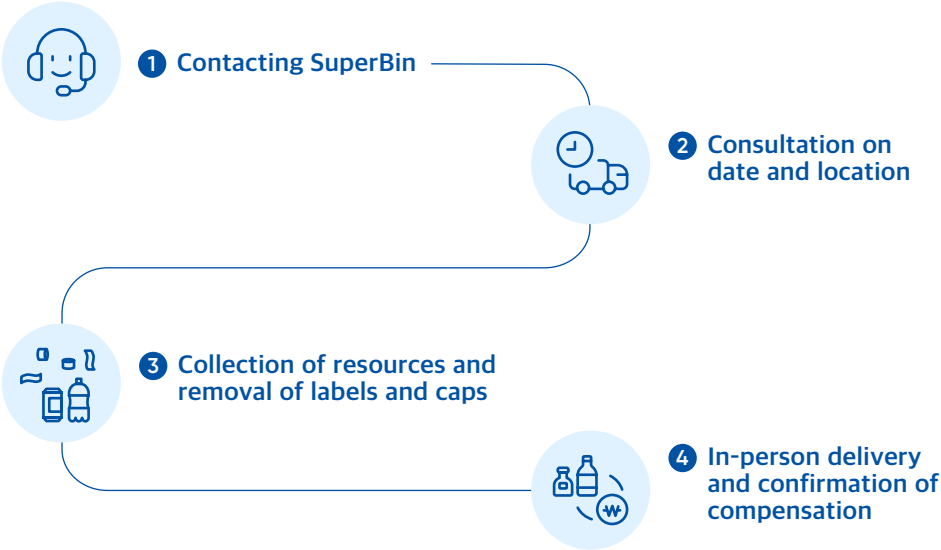
SuperBin More is an in-person collection channel to develop the recycling resources hidden and abandoned in cities as much as possible. Offering services which provides regions where Nephrons are installed, SuperBin's field masters and users meet in person to trade resources.

When users collect a massive amount of clean PET resources with the labels and caps removed, SuperBin offers compensation based on the weight of the resources.

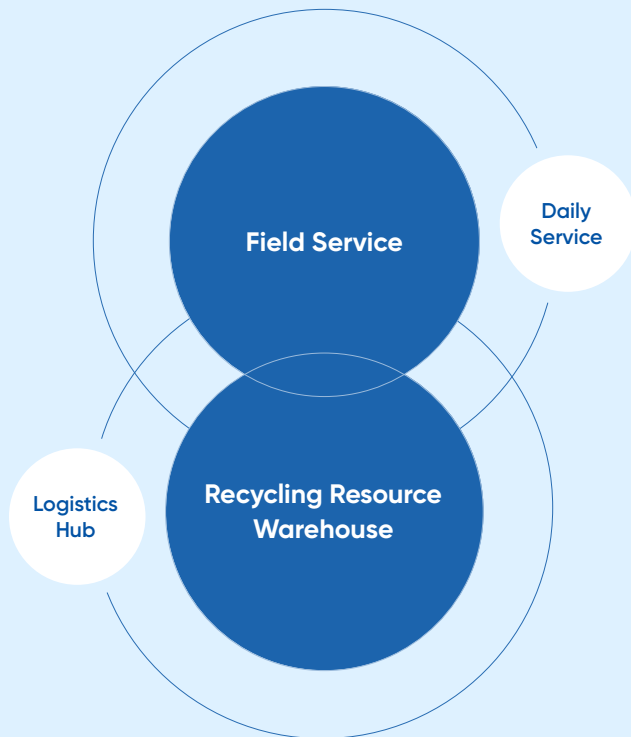
It is flexibly operated based on the characteristics of each region, including collecting from certain locations or collecting through in-person visits to users.



## How to Participate in SuperBin More and Steps



## 2 Recycling Resource Logistics & Storing



To maintain clean resources, we are establishing a logistics network for delivering the collected resources to recycling processing factories using dedicated vehicles and securing hubs in city centers where recycling resources can be easily gathered.

## Field Service

Integrated  
management of  
recycling resources  
in regions

We provide a total operation service to make recycling more enjoyable and waste management more convenient.

SuperBin provides daily care so that users can conveniently use Nephron at any time through our experts and logistics network.

Our responsible management includes equipment check, maintenance of cleanliness in the surrounding environment, remote control, user complaints, point conversion service, and monthly settlement report.





Field Master

A communicator who is always nearby when you need help

Our field masters are always nearby to immediately provide information and solutions needed by users.



Nephron

**Nephron care**

We provide daily care to ensure that Nephron can always be operated in a clean and smooth manner.

Users

**User care**

Users can get help at any time via phone call, SNS, etc., if there are any issues with use methods and products.

Recycling Resource Warehouse

Building the Logistics  
Hub by Region

Recycling resource hub in city centers

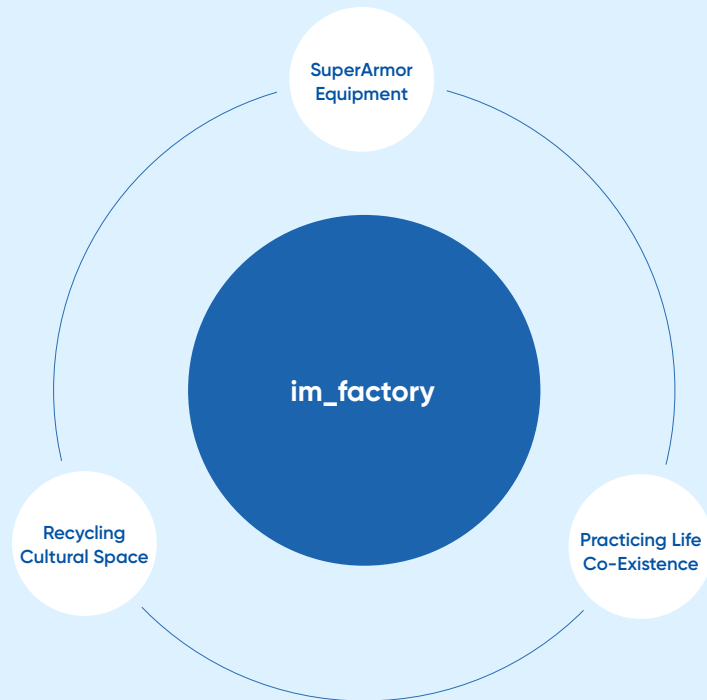
We serve as the platform connecting waste generation and the final processing in city centers and the connector enabling a virtuous cycle of waste generated in regions.

We provide educational and cultural contents on resource circulation while collecting recycling resources and are engaged in diverse environment-related activities.



View of a recycling resource warehouse

### 3 Recycling Resource Processing



This is a new concept-based recycling factory where high-quality r-PET Flake is produced based on a smart factory utilizing AI technology and digital equipment.



#### im\_factory

A space where  
Recycling resource  
reprocessing and  
exhibition contents  
coexist

#### “Environment-friendly” factory in the city center

This is an environment-friendly factory where dust, noise, and bad smells are minimized through digital technology. We aim to develop into a space providing diverse experiences on recycling based on differentiation points from existing waste factories.

#### High quality recycling resources being reborn

Through SuperArmor which is a form of reprocessing equipment, new high-quality resources are recreated. Through the sorting and cleaning process utilizing vision-based AI technology and an automated system, we can make high quality recycling materials.



# SuperArmor's Processing for recycling resources



## 1. Input process

Clean transparent PET bottles collected through SuperBin's Nephron and in-person projects are input.



## 2. AI sorting process

Transparent PET bottles that can generate high-added value are sorted through AI technology



## 3. Grinding and gravitational cleaning process

After grinding transparent PET bottles to a certain size (Flake), foreign substances are sorted and removed using their gravitational difference.



## 4. Hot water cleaning process

The r-PET Flakes are cleaned with high-temperature water to remove foreign substances including glue, etc.



## 5. General cleaning and drying process

To remove foreign substances remaining on the surface of the r-PET Flakes, the cleaning and drying processes are repeated.



## 6. Packaging process

Clean r-PET Flakes with foreign substances removed are packaged into bags. The r-PET Flakes are a material that can be used for diverse purposes.





- 1 Forklift moving PET bales
- 2 SuperArmor equipment



SuperBin's high-purity r-PET Flake

# SuperBin's Cultural Business



The beginning of solidarity under  
the theme of environment

01

Waste Series

02

SuperBin Rookie

03

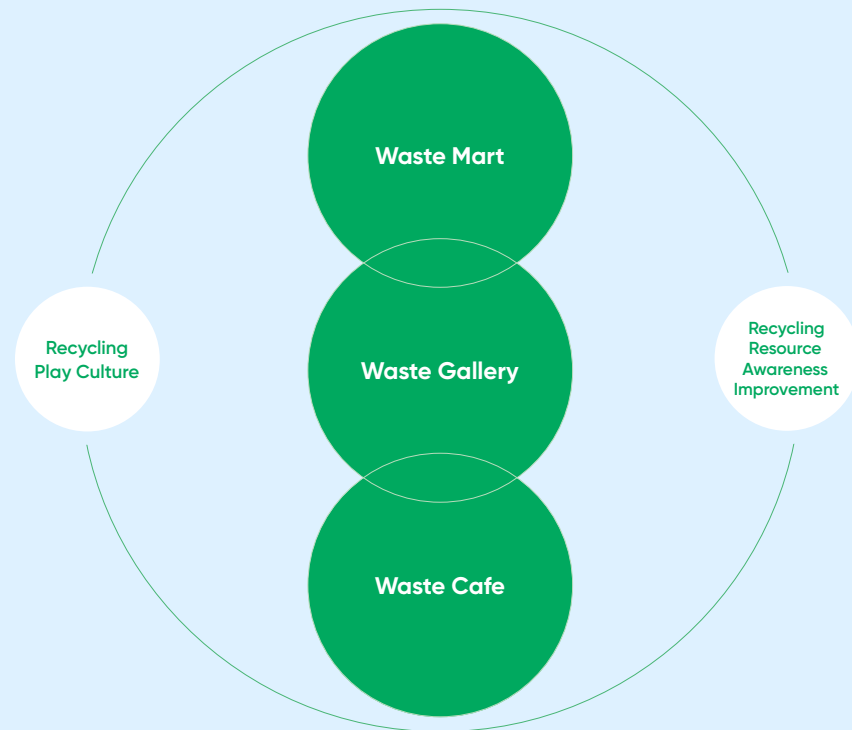
SuperCube

04

Plogging Campaign



# 1 Waste Series



To fundamentally resolve waste issues, people must have an accurate understanding of and new awareness on waste. SuperBin is making diverse attempts to achieve this change through play-type cultural contents.



## Waste Mart

**Waste Mart, Where  
You Shop with Waste**

Dozens of tons of waste are generated every day. However, it is a precious resource that can be turned into money if recycled properly.

SuperBin Waste Mart is a new concept-based mart where it is possible to shop with cans and PETs for the first time in the world. By putting cans and PETs into Nephron, the value is converted into cash points that users can use to purchase all of the products and diverse services.

Waste Mart is where the brands and consumers who understand the importance of resource circulation and pursue an eco-lifestyle meet. Real change can begin when our society reaches consensus on the direction that should be pursued and starts to take small steps toward action.

Once you visit Waste Mart, you will start to see waste on the street from a different perspective, and this new mindset will change your behavior.



## Waste Mart Contents



- 1 Cleaning ZONE
- 2 Pool-eot-sseu ZONE
- 3 Waste Mart Nephron



## Waste Gallery

### Waste, Becoming Art

Waste Gallery is a cultural space providing new perspectives and experiences on waste through artistic interpretations of environment- and waste-related issues.

As an object and medium of upcycling that holds messages on the environment, the meaning and use of waste is expanded through this special exhibition. Visitors can experience the recreation of waste that used to make a space dirty and give an unpleasant impression.

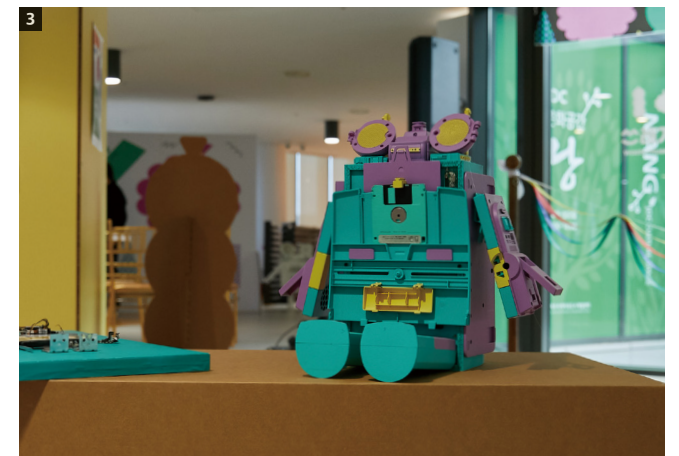






Shadow art, "Glaucous-Winged Gull" made of ocean waste in Jeju Island

## Waste Gallery Contents



- 1 Recycling resource collection robot
- 2 Shopping ZONE
- 3 Upcycling object



## Waste Cafe

### Experiencing Recycling

Waste Cafe is an upcycling cultural space providing positive moments related to waste by offering fun and rest based on waste-themed experiential contents.

With the upcycling recipes, visitors can make their own objects as unique as the experience of relaxing and enjoying a drink at Waste Cafe.





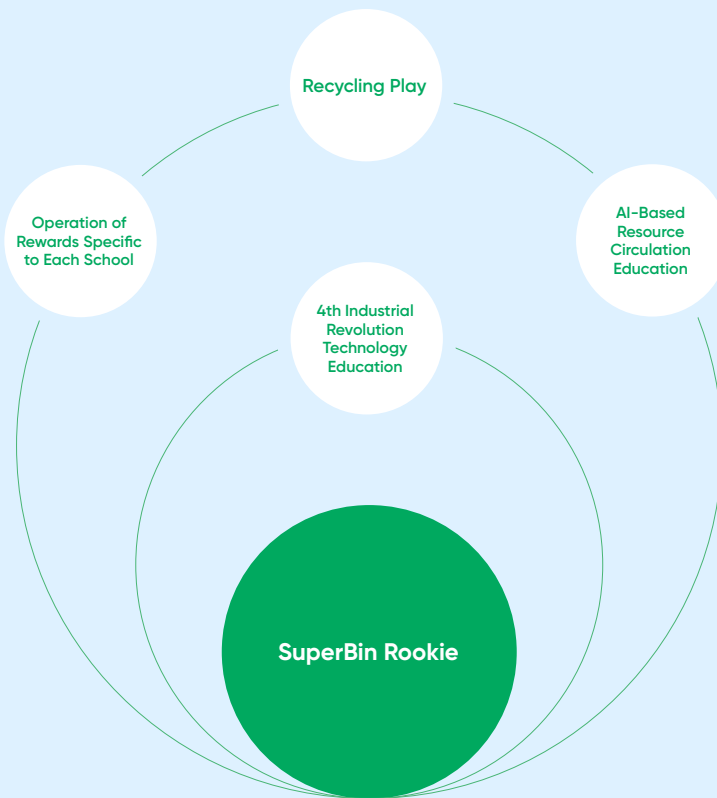


## Waste Cafe Contents



- 1 Waste Cafe counter
- 2 Waste Cafe Nephron
- 3 Waste Cafe experience kit

## 2 SuperBin Rookie



SuperBin Rookie is a service operated for schools to nurture the consumers of the future. It provides a service through which students can joyfully learn about recycling and the preciousness of the environment.



### Roles of SuperBin Rookie

#### Possible to have the self-directed participation of students and an experiential program

When students put resources in Nephron, this process gives a notion of seeds that can be planted and grown in children's minds based on each school's policies. Students experience compensation for self-directed participation and learn the value of waste.

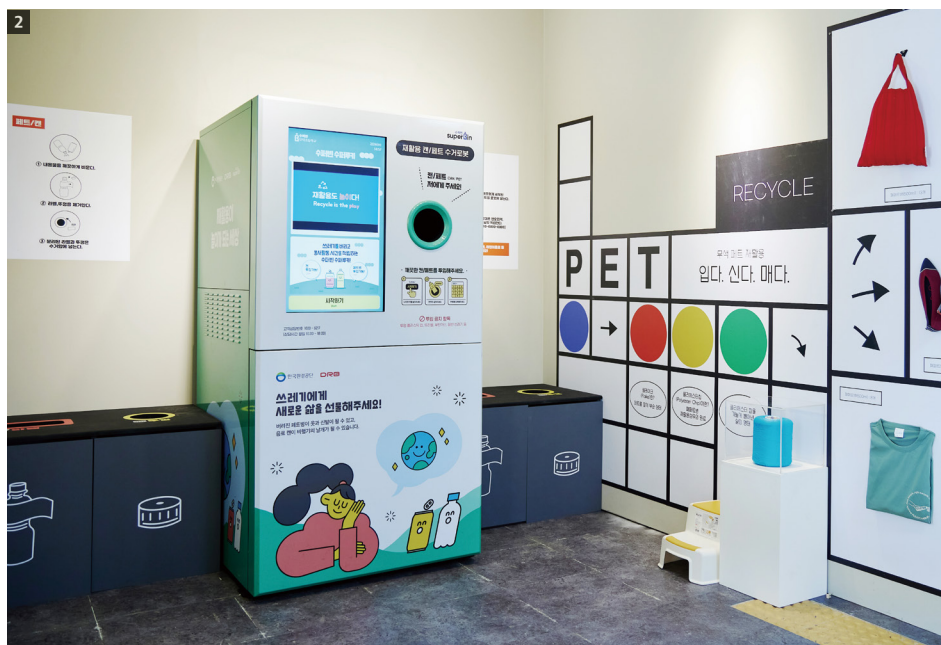
#### Curriculum-related AI education

It is possible to experience an actual case of utilizing AI featured in diverse curriculums and experience part of the AI-based waste management process actually used in real industries.

#### Doubling the fun of participating with SuperBin Rookie cultural business contents

Through the SuperBin Rookie cultural business, we are providing support so that students can form their opinions in a self-directed way and engage in resource circulation together with enterprises or civic groups.





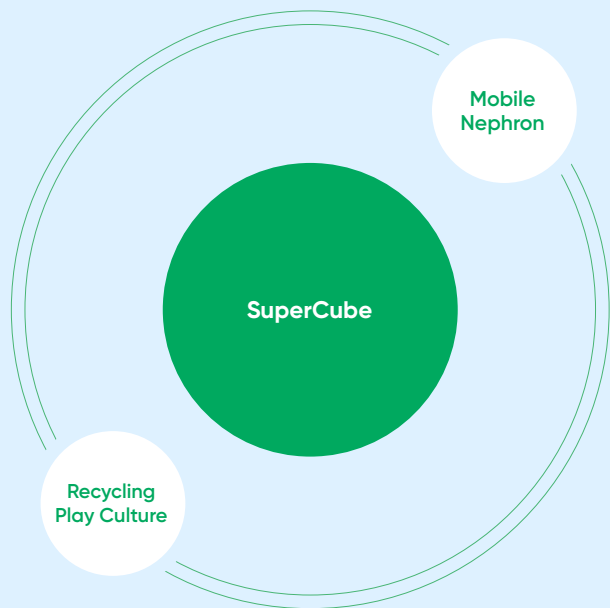
- 1 Resource circulation education
- 2 Case of SuperBin Rookie Nephron installation (Modeok Elementary School in Busan)



Children waiting for Nephron experience



### 3 SuperCube



This is a perception transition campaign where people share the fun and educational impact of the circular economy in a short period of time and experience its value. Through cultural contents that reinterpret waste from a play perspective, we provide an opportunity to change people's perceptions on waste.



#### Roles of SuperCube

##### Presenting new perspective on waste

It is a chance for many users to perceive recycling as a positive play culture. Compensation can be given in cash points, event participation, and donations, etc.

##### Providing a recycling experience aligned with the event's theme

In line with events organized by the host company, it is possible to create rich contents.

##### Efficient recycling waste solution

We help convenient recycling processing based on the specialized waste process.

# SuperCube Operation Records

## Regional/corporate events

### Seoul

- Gireum new town complex 11 LOTTE CASTLE Golden Hills (March 2023)
- Yongsan LOTTE CASTLE Center Foret (March 2023)
- The 3rd National Park Day, Bukhansan National Park (March 2023)
- Godeok LOTTE CASTLE Beneluce (November 2022)
- Heukseok New Town LOTTE CASTLE Edu Foret (March 2022)
- GS Caltex Energy Plus Unpack Event (November 2020)
- Seongdong-gu Social Venture Expo (October 2019)
- Seoul Student Maker Geek Festival (October 2019)

### Gyeongsang

- Daegu Namsan LOTTE CASTLE CentralSKY (November 2022)
- Gyeongju Social Economy Fair (July 2022)

### Gangwon

- Hongcheon County Office (June 2022)
- The 3rd Jooprun (October 2021)
- The 2nd Jooprun (June 2021)
- The 1st Jooprun (November 2020)
- Samcheok Making No Disposable Products Beach (August 2020)

### Gyeonggi-Incheon

- Sustainable Development Pyeongtaek Environment Festival (May 2023)
- 56th ADB Annual Meeting (May 2023)
- Sinheungdeok LOTTE CASTLE Ray City (April 2023)
- Seongbok Station LOTTE CASTLE Park Nine (April 2023)
- Kia Motors' 1st Anniversary Event of Carbon Neutrality Declaration (October 2022)
- World Smart City Expo 2022 (September 2022)
- Seongbok Station LOTTE CASTLE CLASSIEL (March 2022)
- Osan City Hall (August 2021)
- Pungsan-dong Administrative Welfare Center (November 2021)

### Chungcheong

- Daejeon Dong-gu Office (November 2022)
- Seosan Good Neighbors (October 2022)

### Jeolla

- The 3rd National Park Day, Mudeungsan National Park (March 2023)
- Gwangju Nam-gu Office (October 2022)
- Yeosu GS Caltex YEULMARU G festival (September 2022)
- Naju Korea Communications Agency (July 2022)
- Jeonju LH Jeonbuk headquarters (November 2021)
- Yeonggwang Handicraft Community ManJirak (October 2020)

## Schools events

### Seoul

- Gangseo Yangcheon District Office of Education (April 2023)
- Seoul Yeonga Elementary School (2021, April 2022)
- Seoul Global High School (October 2021)

### Gyeongsang

- Uiryeong Elementary School (November 2022)
- Hapcheon Office of Education (June 2022)
- Ulsan Pyeongsan Elementary School (May 2022)
- Ulsan Seosaeng Elementary School (May 2022)
- Ulsan Beomseo Elementary School (May 2022)
- Haman Jungang Elementary School (October 2021)

### Gyeonggi

- Anyang Girls' High School (November 2022)
- Goyang Pungdong Elementary School (November 2021)
- Goyang Pungsan Elementary School (November 2021)

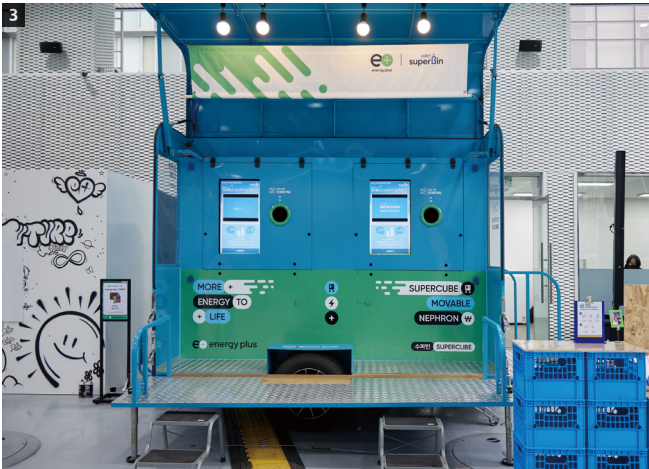
### Chungcheong

- Eumseong Daegeum High School (November 2022)
- Daejeon Daesin High School (October 2022)
- heongju Cheongwon High School (July 2022)
- Hongseong Galsan Elementary School (April 2022)

### Jeolla

- angseong Sky-Star-Grass-light Village School (November 2022)

# SuperCube Contents



- 1 SuperCube contents 'Mei-keo-sseu'
- 2 Cleaning ZONE
- 3 Examples of partial wrapping of SuperCube



## 4 Plogging Campaign



We have learned that there are many people who want to participate in environmental activities. We are continuing our small but meaningful cultural activities.



### Plogging Campaign

**Run for us,  
Run for earth.**

Under the grand discourse of environment protection, one person cannot make a major difference. However, if people gather their efforts and are supported by professional solutions, we believe that a small flap of wings can create a giant wave.

SuperBin has gathered commitments together to create positive value in our society by combining these small flaps, and the Plogging Campaign is a project that realizes such commitments.

This new concept of learning culture makes it possible to carry out environment protection activities in a more enjoyable way and participate in sports in a more meaningful way.





## Plogging Campaign Contents

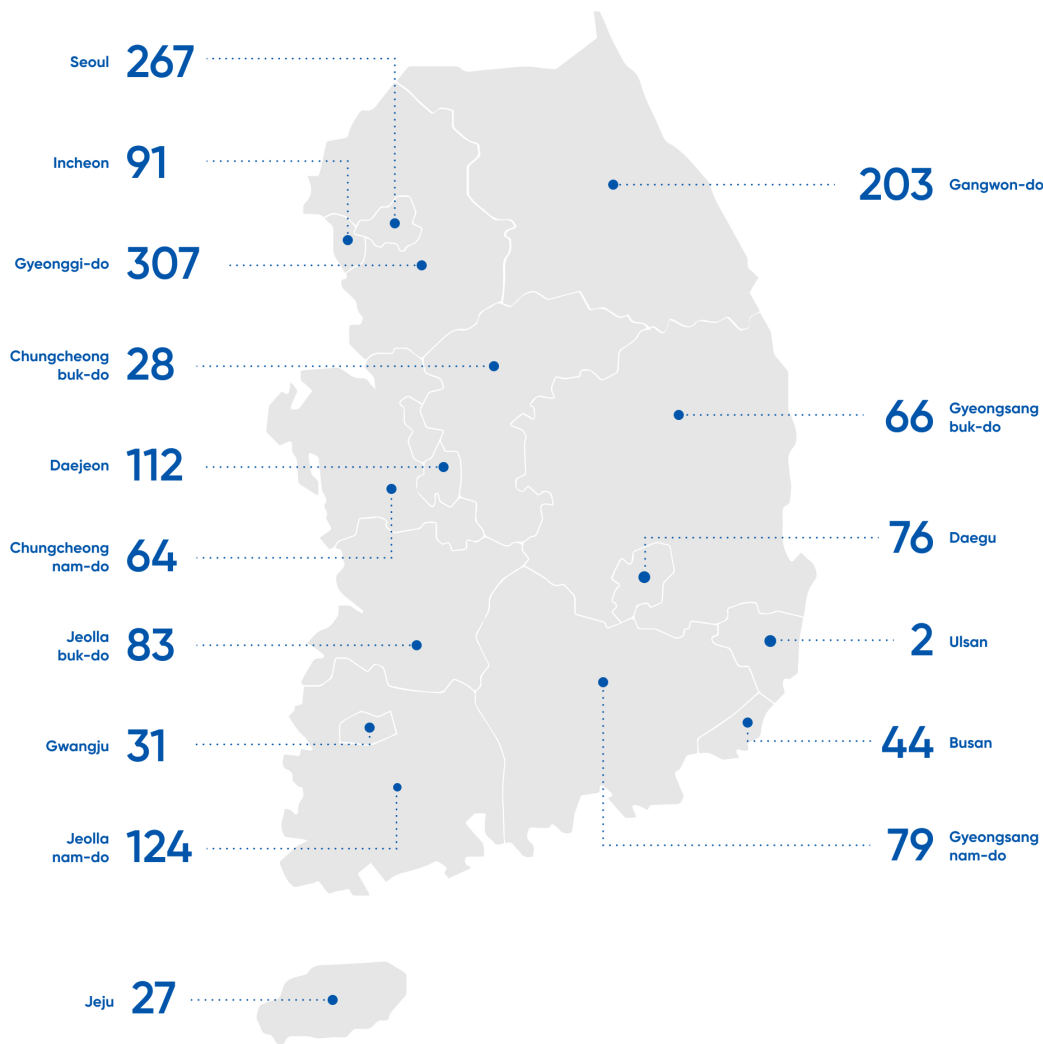


- 1 Waste Art
- 2 Events without disposables
- 3 Water purification Plogging



# SuperBin's Map

The number of Nephron installed by region



Total number of Nephron nationwide **1,606**  
Recycling store in operation **115**

As of September 2025

## Seoul | 264

- B2G Nephron** Gangnam-gu 2, Gangdong-gu 13, Gangbuk-gu 5, Gangseo-gu 12, Gwanak-gu 26, Gwangjin-gu 14, Dobong-gu 10, Dongjak-gu 24, Seodaemun-gu 14, Seocho-gu 2, Songpa-gu 6, Yangcheon-gu 15, Yeongdeungpo-gu 9, Jongno-gu 4, Jung-gu 5, Jungnang-gu 11
- B2B Nephron** Lotte Mart & Lotte Holdings: Yeongdeungpo-gu 2, Songpa-gu 2, Seocho-gu 2 | Korea Seven & Lotte Holdings: Gangnam-gu 4, Gwanak-gu 1, Gwangjin-gu 1, Dobong-gu 2, Dongdaemun-gu 2, Mapo-gu 1, Seongdong-gu 2, Seongsu-gu 2, Songpa-gu 1, Yeongdeungpo-gu 1, Yongsan-gu 1, Jongno-gu 1, Jungnang-gu 2 | Korea Seven & Environment Foundation: Seongdong-gu 1, Songpa-gu 2 | Kookmin Bank: Yeongdeungpo-gu 2 | Kookmin Card: Jongno-gu 1 | Sae-a: Gangnam-gu 1 | SK Innovation: Jongno-gu 4 | Baedal Minjok: Songpa-gu 1 | Bukhansan National Park: Dobong-gu 1, Seongsu-gu 1 | Dunamu: Gangnam-gu 4 | Kamco: Jung-gu 1 | Samsung SDS: Songpa-gu 1 | Kamco: Gangnam-gu 1 | KEITI: Eunpyeong-gu 1

- Culture Business** Children's Grand Park SupBox('18.5-'21.5) / Yeonnam-dong Waste Mart('19.6-9)
- SuperBin Rookie** Anam Elem. Sch. 1, Changdeok Girls' Mid. Sch. 1, Daerim Mid. Sch. 1, Daewon H.S. 1, Eonbuk Elem. Sch. 1, Gangmyeong Elem. Sch. 1, Gangsol Elem. Sch. 1, Gaewon Mid. Sch. 1, Geoye Elem. Sch. 1, Gonghang H.S. 1, Gonghang Elem. Sch. 1, Seoul National School for the Deaf. 1, Guksabong Mid. Sch. 1, Geumho Elem. Sch. 1, Nowon Elem. Sch. 1, Deoksoo H.S. 1, Banpo H.S. 1, Bulam Mid. Sch. 1, Sangmyeong Univ. Affiliated Girls' H.S. 1, Samsung Sp. Sch. 1, Kyunghee Mid. Sch. 1, Seoul National University Affiliated Elem. Sch. 1, Seongdong Technical H.S. 1, Seongja Elem. Sch. 1, Sejong Science H.S. 1, Soongmoon Mid. Sch. 1, Sookmyung Women's University 2, Sinseo Elem. Sch. 1, Sinseong Elem. Sch. 1, Sungseo Elem. Sch. 1, Eonju Elem. Sch. 1, Misung Mid. Sch. 1, Osan Mid. Sch. 1, Wolgye Elem. Sch. 1, Wonhyo Elem. Sch. 1, Jamsil Elem. Sch. 1, Jangchung Elem. Sch. 1, Jangpyeong Mid. Sch. 1, Jeongsin Girls' H.S. 1, Jeongui Girls' Mid. Sch. 1, Jingwan H.S. 1, Mokil Mid. Sch. 1, Namsan Elem. Sch. 1, Haeseong Girls' H.S. 1, Yeomkyoung Elem. Sch. 1, Yonsei Rehad Univ. 1

## Chungcheongnam-do | 63

- B2G Nephron** Dangjin-si 17, Boryeong-si 8, Asan-si 20(Baemin), Seosan-si 3, Cheonan-si 2
- B2B Nephron** Samsung Display: Asan-si 11, Cheonan-si 3

## Jeollabuk-do | 83

- B2G Nephron** Gochang-gun 13, Gimje-si 18, Namwon-si 6, Buan-gun 7, Suncheon-gun 2, Wanju-gun 3, Iksan-si 7, Jeonju-si 1, Jeongeup-si 3, Jinan-gun 19
- SuperBin Rookie** Gochang Yeongseon Mid. Sch. 1, Buan Girls' H.S. 1, Iksan Wongwang Mid. Sch. 1, Gunsan Hoehyeon Mid. Sch. 1

## Jeollanam-do / Gwangju | 155

- B2G Nephron** Gangjin-gun 5, Gokseong-gun 8, Gwangyang-si 14, Gwangju-si 25, Mokpo-si 18, Suncheon-si 40, Yeosu-si 28, Yeongam-gun 9, Wando-gun 2
- B2B Nephron** KEPCO KDN: Naju-si 1
- SuperBin Rookie** Gwangju Donga Girls' Mid. Sch. 1
- SuperBin More** Yeosu-si 1

## Jeju | 27

- B2G Nephron** Seogwipo-si 10, Jeju-si 1
- B2B Nephron** Jeju Development Corporation 16
- Culture Business** Jeju-si Waste Museum('19.12-'20.2)

## Gyeonggi-do / Incheon | 400

- B2G Nephron** GaPyeong-Gun 1, Goyang-si 11, Gunpo-si 14, Seongnam-si 13, Anyang-si 100, Yangju-si 13, Osan-si 5, Yongin-si 16, Uijeongbu-si 32, Icheon-si 9, Incheon-si 82, Pocheon-si 6, Hanam-si 3, Hwaseong-si 30, Yeosu-si 3
- B2B Nephron** Lotte Mart & Lotte Holdings: Icheon-si 1, Suwon-si 4, Siheung-si 2, Ansan-si 3, Osan-si 2, Incheon Metropolitan City 7 | Korea Seven & Lotte Holdings: Gwangmyeong-si 1, Seongnam-si 1 | Samsung Display: Yongin-si 5 | Naver: Seongnam-si 28 | NCSoft: Seongnam-si 2 | Environmental Industry Research Complex: Incheon-si 1 | SK Ecoplant: Yongin-si 1 | Daewoo E&C: Incheon-si 1 | Sansung SDS: Seongnam 1
- Recycling Store** Incheon Namdong-gu 9, Incheon Dong-gu 8, Incheon Michuhol-gu 23, Incheon Bupyeong-gu 8
- Culture Business** Osan Waste Cafe('20.4-'22.12)
- SuperBin Rookie** Gwangmyeong Chunghyun Mid. Sch. 1, Yongin Joongang Yedam Sch. 1, Incheon Foreign Language H.S. 1, Incheon Dongsan Mid. Sch. 1, Anyang Sinseon Mid. Sch. 1, Bupyeong H.S. 1

## Gangwon-do | 191

- B2G Nephron** Samcheok-si 31, Sokcho-si 13, Yanggu-gun 17, Yangyang-gun 4, Yeongwol-gun 2, Wonju-si 22, Inje-gun 5, Cheorwon-gun 13, Chuncheon-si 20, Taebaek-si 13, Pyeongchang-gun 14, Hongcheon-gun 38, Hwacheon-gun 8
- B2B Nephron** K-water: Hwacheon-gun 3
- Culture Business** Samcheok Waste Sch.('24.1-now)

## ChungcheongBuk-do / Daejeon | 140

- B2G Nephron** Daejeon-si 108, Boeun-gun 2, Okcheon-gun 1, Cheongju-si 14, Chungju-si 10
- B2B Nephron** K-water: Daejeon-si 1 | Korea Seven & Lotte Holdings: Daejeon-si 2
- Recycling Store** Daejeon Daedeok-gu 12
- SuperBin Rookie** Daejeon Bongam Elem. Sch. 1

## Gyeongsangbuk-do / Daegu | 142

- B2G Nephron** Gyeongsan-si 2, Gyeongju-si 6, Gumi-si 12, Gimcheon-si 6, Daegu-si 71, Andong-si 7, Yeongcheon-si 8, Yecheon-gun 8, Uiseong-gun 4, Chilgok-gun 3, Pohang-si 3
- B2B Nephron** Korea Credit Guarantee Fund: Daegu-si 1 | K-water: Daegu-si 1 | KEPCO ENC: Gimcheon 3
- SuperBin Rookie** Daegu Dongcheon Elem. Sch. 1, Daegu Hyupsung H.S. 2, Yeongcheon Poenun H.S. 1, Pohang Sehwa H. S. 2, Pohang HanDong Global Sch. 1,

## Gyeongsangnam-do / Busan / Ulsan | 125

- B2G Nephron** Geoje-si 2, Goseong-gun 1, Gimhae-si 15, Miryang-si 12, Busan-si 5, Sancheong-gun 5, Changnyeong-gun 5, Changwon-si 17, Hadong-gun 4, Hamyang-gun 10, Hapcheon-gun 3
- B2B Nephron** HRDK: Ulsan-si 1
- Smart Village** Busan-si: Nephron 8, Kidney(Smart bin) 31
- SuperBin Rookie** Goseong Cheolseong H.S. 1, Ulsan Beomseo Elem. Sch. 1, Changnyeong Office of Education 1, Changnyeong Namji Elem. Sch. 1, Changnyeong Mid. Sch. 1, Changnyeong Yeongsan H.S. 1



Waste is your money



Recycling is play

**Tel**

1600-6217

**Instagram**

[instagram.com/superbin\\_official](https://www.instagram.com/superbin_official)

**Fax**

031-605-6219

**Homepage**

[www.superbin.co.kr](http://www.superbin.co.kr)

**Address**

Head Office : 5th Fl., 216, Hwangsaeul-ro, Bundang-gu, Seongnam-si, Gyeonggi-do

Corporate R&D center : 5th Fl., 216, Hwangsaeul-ro, Bundang-gu, Seongnam-si, Gyeonggi-do